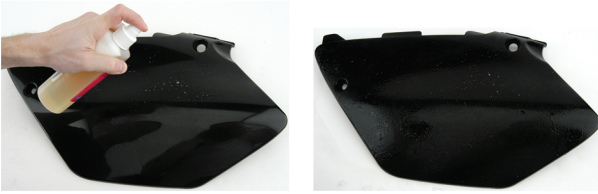


INSTALLATION INSTRUCTIONS

WARNING: Cancer & Reproductive Harm –
www.P65Warnings.ca.gov

INSTALLATION WITH ATTACK APPLICATION FLUID

1. Clean your plastics. Remove all dirt, oil, old adhesive, etc. Rinse with water and dry with a lint-free cloth.
2. Before applying new graphic, check to see how the graphic lines up on your plates. Check to see how holes line up,, see how it fits with curves, etc.
3. Spray your plastic with a light mist of decal application fluid.



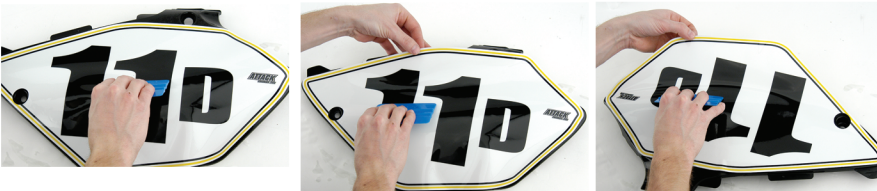
4. Separate the backing from the decal. Spray a fine mist on the adhesive on the back of the decal.



5. Lightly apply the graphic, being careful to line up holes and cutouts.



6. Starting in the center, squeegee the application fluid out to the edges. Some wrinkles may come up around the edges. Allow a few minutes for the application fluid to dry and then push the wrinkles down with your fingers or with the squeegee.



7. Using a clean cloth, wipe the application fluid from the edge of the number plate.



8. Do not ride your bike for at least 24 hours after you have finished installing your graphics. This allows the application fluid time to evaporate and makes the graphics stick better.

